

# 2023 VET FOR SCHOOL STUDENTS

PATHWAYS INTO THE CIVIL CONSTRUCTION INDUSTRY



# Acknowledgement of Country

Civil Train acknowledges the traditional owners of the land on which we live and work and recognises Aboriginal and Torres Strait Islander peoples' unique cultural and spiritual relationship to the sky, land and waters of South Australia.

We pay our respects to their Elders past, present and emerging and extend that respect to other Aboriginal and Torres Strait Islander Peoples. We are committed to engaging with Aboriginal communities and people to support, develop, and empower them and their communities.



## VET IN SCHOOLS WITH CIVIL TRAIN

Civil Train's VET in school programs, are tailored for students from Year 7 to Year 12. They provide students the opportunity to learn specific industry skills in civil construction and gain credit towards a nationally recognised qualification while undertaking their South Australian Certificate of Education (SACE).

### WHY CIVIL TRAIN?

For over 50 years, the Civil Contractors Federation SA has been the peak industry body, representing, promoting and connecting the civil construction industry in South Australia.



**CIVIL CONTRACTORS  
FEDERATION  
SOUTH AUSTRALIA**

The Civil Contractors Federation SA's head office is located at 1 South Road Thebarton, South Australian. Our RTO, Civil Train, operates in South Australia, the Northern Territory and Western Australia and is one of the largest, private training providers for the Civil Construction and related industries.

Our RTO has revolutionised the training and learning experiences of those entering or already employed in Civil Construction and related industries delivering structured, nationally accredited qualifications to meet workforce development needs. We also deliver over twenty accredited and non-accredited short courses, delivered by qualified training professionals who are experienced and passionate in their fields of expertise.

### HOW DO I SIGN UP?

To apply for any of the courses you see in this guide, speak to your school's VET coordinator or school counsellor. Enrolment process will begin with VET coordinators or School representatives registering interest. Please scan the QR code to register your interest and one of our Civil Train Team will be in touch.



To assist students to prepare for a Flexible Industry Pathways course, students are required to first complete the VET Readiness Orientation [VETRO] process, which can be started from as early as Year 10.

More information about VETRO is available at <https://providers.skills.sa.gov.au/vetro-for-school-students>

### WHAT CAN CIVIL TRAIN OFFER?

Civil Train has a various range of courses available for school students in 2023.

Below is a list on what we can offer:

- 3 Hour Civil Industry Awareness Session
- 2 Day Civil Construction Trade Taster Non-Accredited Program
- Civil Construction Flexible Industry Pathways program (FIP)
- Skills Clusters
- Pre-Employment Industry Licensing
- Special Projects
- School Based Apprenticeships

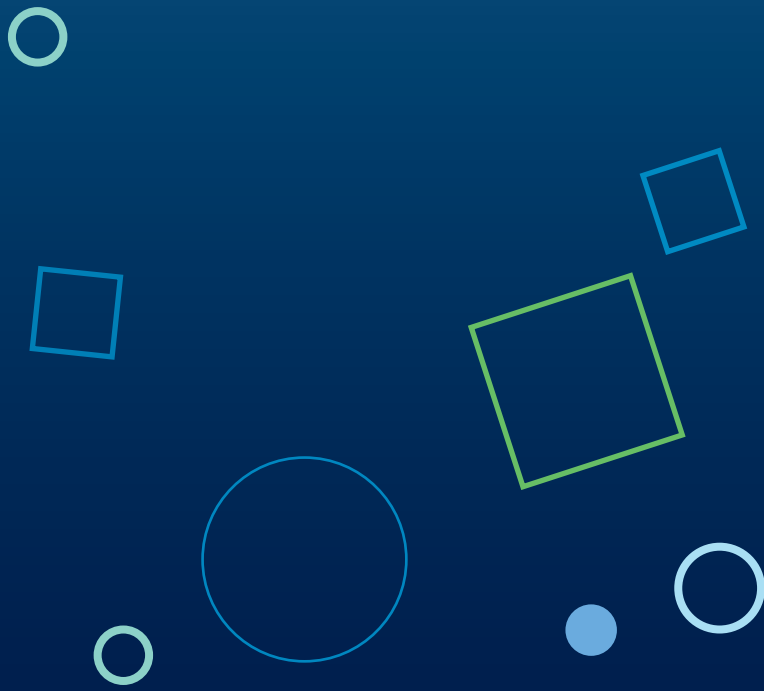


# CONTENTS

<b>1. IMMERSE YOURSELF IN CIVIL</b>	<b>4</b>
3 Hour Civil Industry Awareness Session – Bus Tour	5
3 Hour Civil Industry Awareness Session – House Tour	5
2 Day Civil Construction Trade Taster Non-Accredited Program	6
<b>2. FLEXIBLE INDUSTRY PATHWAYS</b>	<b>7</b>
Certificate II in Resources Infrastructure Work Preparation	8
<b>3. SKILLS CLUSTERS</b>	<b>9</b>
Traffic Controller Skill Cluster	10
Introduction to Civil	11
Advanced Civil Construction	12
<b>4. PRE-EMPLOYMENT INDUSTRY LICENSING</b>	<b>13</b>
White Card	14
Advanced Forklift Licence	14
<b>5. SPECIAL PROJECTS</b>	<b>15</b>
Roads2Civil	16
<b>6. SCHOOL BASED APPRENTICESHIPS</b>	<b>17</b>
Certificate II in Civil Construction	18
Certificate III in Civil Construction	19
Certificate III in Civil Construction Plant Operations	20



The Training Division of the CCF RTO 45621



# IMMERSE YOURSELF IN CIVIL

Immerse yourself at the largest non-government training provider of civil construction. Our immersion programs are created to create awareness and provide students the opportunity to gain an interactive experience into the world of Civil Construction.

## 3 HOUR CIVIL INDUSTRY AWARENESS SESSION

*Proudly subsidised by CITB*

### BUSTOUR

Civil Train SA is offering a 3-hour interactive Industry Immersion Bus Tour.

Partnering with local organisations and employers in collaboration with CITB, Civil Train SA will enable students and their VET leaders to experience a live civil construction work site.

A pick up/drop off location in the North and South of Adelaide will see students transported to the World of Civil and see first-hand what it is like to get their boots dirty.

<b>WHO IS IT FOR?</b>	Year 7-10 Students, capped at 15 students and VET teachers/coordinators.
<b>WHEN IS IT?</b>	2 per term (1 North and 1 South)
<b>WHERE IS IT?</b>	Off site, Northern and Southern drop off points to be confirmed.

### HOUSE TOUR

Civil Train SA is offering an in house 3 hour interactive Industry Immersion Session.

Students will have the opportunity to gain an interactive experience into the world of Civil Construction through; gamified learning; operate a variety of simulated heavy machinery including an excavator, front-end loader, and haul truck.

Students will learn how to undertake pre-starts and how to safely operate the vehicles. \*Simulated 'entering a confined space' activity will be conducted in the confined space room at CCF SA training facility, Civil Train SA.

<b>WHO IS IT FOR?</b>	Year 7-10 Students, capped at 15 students and VET teachers/coordinators.
<b>WHEN IS IT?</b>	As requested per school
<b>WHERE IS IT?</b>	Civil Train SA, Level 1, 1 South Road Thebarton

For information on our fees and available subsidies please visit [www.civiltrain.com.au](http://www.civiltrain.com.au)



## 2 DAY CIVIL CONSTRUCTION TRADE TASTER NON-ACCREDITED PROGRAM

*Proudly subsidised by CITB*

Immerse yourself in the largest non-government training provider of civil construction.

Students will gain hands-on experience in the world of civil construction by participating in key technical activities that play an important role in the delivery of industry projects.

On the first day, the students learn about road construction, road safety, and mobile plant (earthmoving) operation. Learners will engage in traffic management activities, scenarios, and gamified learning while operating a variety of simulated heavy machinery such as an excavator, frontend loader, and haul truck. Using our mobile plant simulators, students will learn how to perform pre-starts and how to operate vehicles safely.

On the second day, the students will learn about safe work practices, identifying and locating underground service locations, working at heights, and entering confined spaces. A simulated 'entering a confined space' activity will be conducted in the confined space room as part of an introduction to working at heights and confined space. This activity is not a confined space, but it is used to simulate the conditions of being in one.

Civil Train SA will provide an engaging and interactive 2-Day Trade Taster Program, funded by CITB.

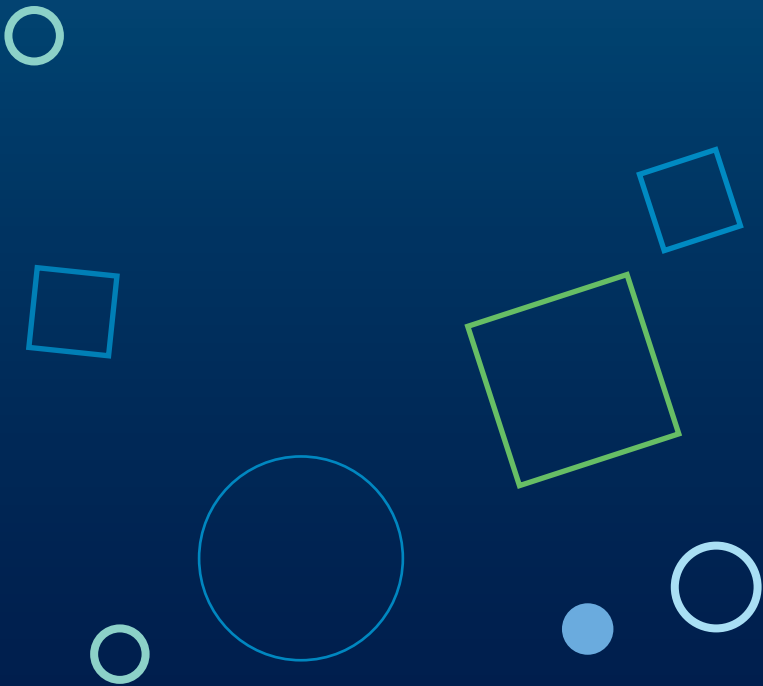
For information on our fees and available subsidies please visit [www.civiltrain.com.au](http://www.civiltrain.com.au)

<b>WHO IS IT FOR?</b>	Year 10-11 Students
<b>WHEN IS IT?</b>	2 per term
<b>WHERE IS IT?</b>	Civil Train SA, Level 1, 1 South Road Thebarton
<b>WHAT WILL YOU IMMERSE YOURSELF IN?</b>	Day 1: Safe work practices, Traffic management and Mobile Plant Simulator operation. Day 2: Intro to: Working at heights, Confined space and identify and locate underground service location.





The Training Division of the CCF RTO 45621



# FLEXIBLE INDUSTRY PATHWAYS

Flexible Industry Pathways (FIPs) enable students to commence a VET qualification whilst at school completing their SACE and are a great option for students looking for a skilled career. FIPs aim to support students into school-based apprenticeships. They are tailored for Year 11 and 12 students.



## RII20120 CERTIFICATE II IN RESOURCES INFRASTRUCTURE WORK PREPARATION

This qualification reflects the roles of individuals who perform mainly routine tasks and procedures, using limited practical skills and fundamental operational knowledge, and taking some responsibility for the quality of the work outcomes.

This Certificate II in Resources and Infrastructure Work Preparation is a pathway qualification and will prepare an individual to successfully undertake a sector specified Certificate III from the Resources and Infrastructure Industry.

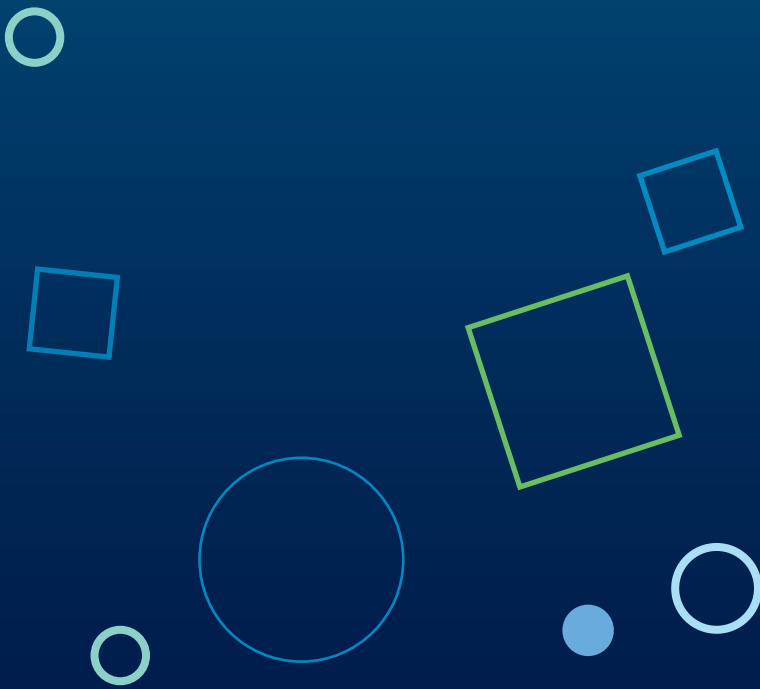
UNIT CODE	UNIT NAME
RIICOM201E	Communicate in the workplace
RIIENV201E	Identify and assess environmental and heritage concerns
RIIRIS201E	Conduct local risk control
RIIWHS201E	Work safely and follow WHS policies and procedures
RIISAM203E	Use hand and power tools
RIICCM203E	Read and interpret plans and job specifications
RIISAM205E	Cut, weld and bend materials
RIIHAN211D	Conduct basic scaffolding operations
RIISAM207E	Apply operational maintenance skills

<b>WHO IS IT FOR?</b>	Year 11 Students 16 years or older
<b>WHEN IS IT?</b>	9am to 3pm, alternating Mondays and Fridays per fortnight (20 days delivery in total)
<b>WHERE IS IT?</b>	Northern Adelaide delivery, Civil Train Live Site
<b>TOTAL NOMINAL HOURS</b>	336

<b>SACE CREDITS</b>	40 (Stage 1)
---------------------	--------------

For information on our fees and available subsidies please visit [www.civiltrain.com.au](http://www.civiltrain.com.au)





# **SKILLS CLUSTERS**

Skills Clusters lead by school demand and RTO availability. They contain a cluster of accredited units of competency aligned to the requirements of the civil construction industry. Each are designed to support students in developing skills and knowledge in a particular work area and can count towards a full qualification.

# TRAFFIC CONTROLLER SKILL CLUSTER

This skill set addresses the skills and knowledge to work in traffic controller in a temporary traffic management context. The safety of drivers, pedestrians, and employees is ensured by traffic controllers, who control the movement and speed of vehicles. When automatic lights are not available, such as next to road construction sites, during public events, or as part of a coordinated emergency response, traffic controllers are frequently called upon to manually direct traffic.

This program incorporates additional unit RIIWHS302E – Implement traffic management plans

Under South Australian Legislation the minimum two units required to perform Traffic Management include: RIIWHS302E – Implement Traffic Management Plans and RIIWHS205E – Control Traffic with Stop/Slow Bat (Issued by the Approved Training Provider providing the training). A Work Zone Traffic Management card will be issued by the Department for Infrastructure and Transport on successful completion of the course.

UNIT CODE	UNIT NAME
RIICOM201E	Communicate in the workplace
RIIWHS201E	Work safely and follow WHS policies and procedures
RIIWHS205E	Control traffic with stop-slow bat
RIIWHS206	Control traffic with portable traffic control devices and temporary traffic signs
RIIWHS302E	Implement traffic management plans

<b>WHO IS IT FOR?</b>	Year 11 and 12 Students
<b>WHEN IS IT?</b>	Delivery over 4 days from 8am to 4:30pm
<b>WHERE IS IT?</b>	Civil Train Regency Park: 16-18 Tikalara Street, Regency Park
<b>TOTAL NOMINAL HOURS</b>	100

### Pathways Information

The units provide credit towards a RII30920 Certificate III in Civil Construction qualification and other qualifications that allow for selection of these units.

<b>SACE CREDITS</b>	10 (Stage 1)
---------------------	--------------

For information on our fees and available subsidies please visit [www.civiltrain.com.au](http://www.civiltrain.com.au)



# INTRODUCTION TO CIVIL

Any infrastructure development involving anything to do with water, soil, or transportation is known as civil construction, making the Introduction to Civil Construction skill set the necessary first step on your professional path in this field.

In order to help you develop practical skills and understand details specific to the business, the course is designed to give you experience working on civil construction projects as you complete your training.

UNIT CODE	UNIT NAME
RIIBEF201E	Plan and organise work
RIICCM207E	Spread and compact materials manually
RIISAM203E	Use hand and power tools
RIIWHS201E	Work safely and follow WHS policies and procedures
RIICCM205F	Carry out manual excavation

## Pathways Information

The units provide credit towards a RI20720 Certificate II in Civil Construction qualification and other qualifications that allow for selection of these units.

For information on our fees and available subsidies please visit [www.civiltrain.com.au](http://www.civiltrain.com.au)

<b>WHO IS IT FOR?</b>	Year 10 and Year 11 Students
<b>WHEN IS IT?</b>	Flexible delivery at 2 days per week across a term or 2 weeks intensive delivery within term.
<b>WHERE IS IT?</b>	Civil Train Live Site
<b>TOTAL NOMINAL HOURS</b>	140

<b>SACE CREDITS</b>	20 (Stage 1)
---------------------	--------------



# ADVANCED CIVIL CONSTRUCTION

In order to fulfill the changing training and skill requirements of businesses and employers the Advanced Civil Construction Skills Cluster has been formed in consultation with industry (Civil Contractors Federation South Australia Ltd) which is seeking suitably skilled individuals to progress into an apprenticeship to work as Civil Construction workers. The core skills and knowledge are focused on the states emerging major infrastructure projects requiring new technical skills and knowledge.

UNIT CODE	UNIT NAME
RIIRIS301E	Apply risk management processes
RIICRC302E	Place and form concrete kerb, channel, and fixtures
RIICRC314E	Handle concrete materials
RIICRC303E	Lay pavers
RIIRTM203E	Work as a safety observer/spotter

<b>WHO IS IT FOR?</b>	Year 12 – for students who have completed a VET qualification and wish to continue on their selected employment pathway
<b>WHEN IS IT?</b>	On request delivery
<b>WHERE IS IT?</b>	Civil Train Live Site
<b>TOTAL NOMINAL HOURS</b>	144

## Pathways Information

The units provide credit towards a RI130920 Certificate III in Civil Construction qualification and other qualifications that allow for selection of these units.

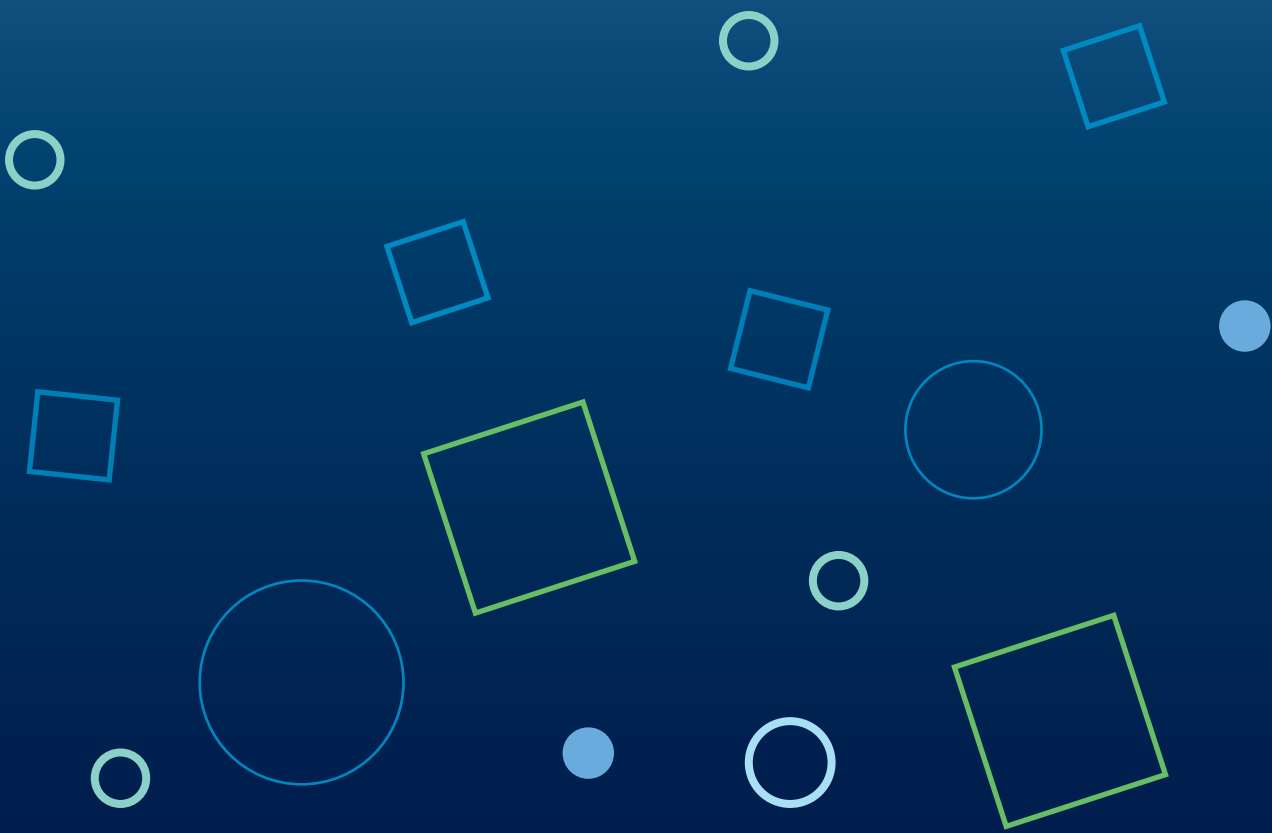
For information on our fees and available subsidies please visit [www.civiltrain.com.au](http://www.civiltrain.com.au)

<b>SACE CREDITS</b>	20 (Stage 2)
---------------------	--------------





The Training Division of the CCF RTO 45621



# PRE-EMPLOYMENT INDUSTRY LICENSING

For competencies that meet specific industry requirements.

## WHITE CARD

White Card is a term used to describe the card issued by a Registered Training Organisation indicating that a person has undertaken general induction training for construction work.

This is a training course that provides basic knowledge of construction work, the Work Health and Safety (WHS) laws that apply, common hazards likely to be encountered in construction work and how the associated risks can be controlled.

Under WHS legislation, workers on construction sites in Australia must undertake general induction training or 'White Card training' and have evidence of their attendance from the course before they are permitted to commence work on a construction site.



UNIT CODE	UNIT NAME	TOTAL NOMINAL HOURS
CPCWHS1001	Prepare to work safely in the construction industry	6



## ADVANCED FORKLIFT LICENCE

Forklift operation has been classed as high risk work since 1 September 2010. To undertake this work you need a Licence to Perform High Risk Work. Forklift truck (Class LF) - covers the operation of a powered industrial truck equipped with a mast and an elevating load carriage to which is attached a pair of fork arms or other attachment.

Students must be 18 years or over to undertake this licence.



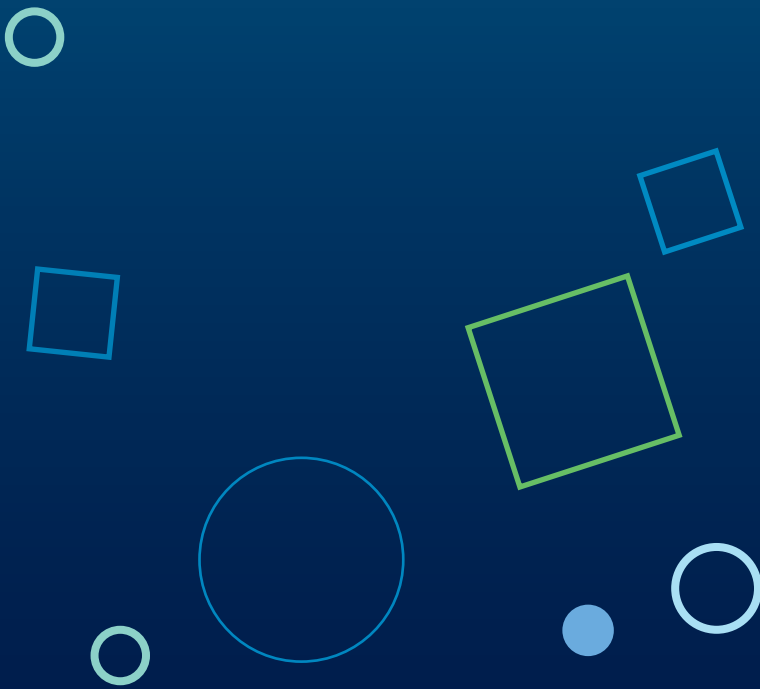
UNIT CODE	UNIT NAME	TOTAL NOMINAL HOURS
TLILIC0003	Licence to operate a forklift truck	40



For information on our fees, available subsidies and delivery schedule please visit [www.civiltrain.com.au](http://www.civiltrain.com.au)



The Training Division of the CCF RTO 45621



# SPECIAL PROJECTS

Collaborative innovation between industry, employers and education, that are designed to support students in developing skills and knowledge in a particular work area and can count towards a full qualification. Your EOI will be directed to our Project Management team..



## ROADS2CIVIL

Roads2Civil is an industry-led school-based pre-apprenticeship program by Civil Contractors Federation South Australia (CCF SA), creating a pathway to become a civil apprentice.

Roads2Civil is a collaborative innovation between industry, employers and education, creating a “new norm” where career pathways into non-traditional, yet critical trades are resolved like never before. A new model which delivers replicable results, providing sustainable positives in the form of apprenticeships on an ongoing basis.

The employer partner providing advice and industry support is Civil Apprenticeship and Careers (CACL), the only Civil Industry led GTO in South Australia. Partnering with Civil Train SA helps deliver the current demand in accredited training and employability skills to students.

Its core structure is the Introduction to Civil Construction skill set, but with school and local community partners driving real projects. Bringing training, schools and community organisations together to produce a partnership program that offers practical real-life experience on a live work site, whilst providing the local community with upgrades of new infrastructure play spaces and school grounds beautification.

Renewal SA are also a key partner, supporting many elements in the project. Suitable students will also have access to work experience placements through Renewal SA's Works Program.

Nationally accredited units form part of the Certificate II in Civil Construction (RII20720) qualification. Students will receive a Statement of Attainment for units of competency achieved including:

UNIT CODE	UNIT NAME
CPCWHS1001	Prepare to work safely in the construction industry
RIIBEF201E	Plan and organise work
RIICCM205F	Carry out manual excavation
RIICCM207E	Spread and compact materials manually
RIISAM203E	Use hand and power tools
RIIWHS201E	Work safely and follow WHS policies and procedures

WHO IS IT FOR?	Year 11 Students
WHEN IS IT?	On request - 4 weeks of training
WHERE IS IT?	Civil Train Live Site
TOTAL NOMINAL HOURS	162

SACE CREDITS	20 (Stage 1)
--------------	--------------

For further information on fees and availability, please scan QR code to register your interest.





The Training Division of the CCF RTO 45621

A collection of various geometric shapes, including circles and squares, in shades of blue, green, and orange, scattered across the upper half of the page.

# SCHOOL BASED APPRENTICESHIPS

Civil construction apprenticeships can now be undertaken as a flexible school-based apprenticeship for Years 10, 11, 12, combining paid employment and structured work-related training as per part of their SACE.

# RII20720 CERTIFICATE II IN CIVIL CONSTRUCTION

The Certificate II in Civil Construction is an introductory course that will give you the fundamental abilities and information required to function as a labourer or worker in the civil construction industry.

You will learn the fundamentals and practical skills required to carry out common operations including manual excavation, concreting, trench work, pipe laying, and pothole repair in this course. Additionally, you will gain a variety of transferrable skills, such as the ability to communicate in the workplace, plan and organise your workload, and operate safely by abiding by WHS laws and procedures.

Successful completion of sixteen (16) units of competency made up of: Ten (10) CORE units and the remaining six (6) ELECTIVE units can be chosen from various packaging groups depending on employer and work requirements. This program is completed as a 24-month (SA) Contract of Training.

**For information on our fees and available subsidies please visit [www.civiltrain.com.au](http://www.civiltrain.com.au)**

CORE UNITS OF COMPETENCY	
UNIT CODE	UNIT NAME
RIIBEF201E	Plan and organise work
RIICCM201E	Carry out measurements and calculations
RIICCM202E	Identify, locate and protect underground services
RIICCM203E	Read and interpret plans and job specifications
RIICCM205F	Carry out manual excavation
RIICCM207E	Spread and compact materials manually
RIICOM201E	Communicate in the workplace
RIISAM203E	Use hand and power tools
RIISAM204E	Operate small plant and equipment
RIIWHS201E	Work safely and follow WHS policies and procedures

Plus, six (6) Elective units are to be chosen in consultation with our Training Team.



# RII30920 CERTIFICATE III IN CIVIL CONSTRUCTION

This qualification reflects the role of a skilled operator working in civil construction, who applies a broad range of skills in a varied work context, using some discretion and judgement and relevant theoretical knowledge.

You will gain a variety of practical skills in this course, including manual excavation, spreading and compacting materials by hand with opportunities to select elective units to provide additional skills such as supporting plant operations, basic levelling and pothole repair.

You can become a worker in the civil construction sector if you successfully complete this course. Additionally, it will prepare you equipped for further study in this area.

Successful completion of twenty-five (25) units of competency made up of: Eight (8) CORE units and remaining ELECTIVE units can be chosen from various packaging groups depending on preferred stream. This program is completed as a 36-month (SA) Contract of Training.

Streams include: General, Bituminous Surfacing, Pipe Laying, Road Construction and Maintenance, and Traffic Management.

For information on our fees and available subsidies please visit [www.civiltrain.com.au](http://www.civiltrain.com.au)

## CORE UNITS OF COMPETENCY

UNIT CODE	UNIT NAME
RIIBEF201E	Plan and organise work
RIICCM201E	Carry out measurements and calculations
RIICCM203E	Read and interpret plans and job specifications
RIICOM201E	Communicate in the workplace
RIIRIS301E	Apply risk management processes
RIISAM203E	Use hand and power tools
RIISAM204E	Operate small plant and equipment
RIIWHS201E	Work safely and follow WHS policies and procedures

Plus, seventeen (17) Elective units are to be chosen in consultation with our Training Team



# RII30820 CERTIFICATE III IN CIVIL CONSTRUCTION PLANT OPERATIONS

This qualification reflects the role of a skilled operator working in civil construction plant, who applies a broad range of skills in a varied work context, using some discretion and judgement and relevant theoretical knowledge. The individual may provide theoretical advice and support a team.

Successful completion of twenty(20) units of competency made up of: Fifteen (15) CORE units and remaining five (5) ELECTIVE units can be chosen from various packaging groups depending on preferred stream. This program is completed as a 36-month (SA) Contract of Training.

For information on our fees and available subsidies please visit [www.civiltrain.com.au](http://www.civiltrain.com.au)



CORE UNITS OF COMPETENCY	
UNIT CODE	UNIT NAME
RIIBEF201E	Plan and organise work
RIICCM201E	Carry out measurements and calculations
RIICCM202E	Identify, locate and protect underground services
RIICCM203E	Read and interpret plans and job specifications
RIICCM205F	Carry out manual excavation
RIICCM206E	Support plant operations
RIICCM207E	Spread and compact materials manually
RIICCM208E	Carry out basic levelling
RIICOM201E	Communicate in the workplace
RIIRIS301E	Apply risk management processes
RIISAM201E	Handle resources and infrastructure materials and safely dispose of nontoxic materials
RIISAM203E	Use hand and power tools
RIISAM204E	Operate small plant and equipment
RIIWHS201E	Work safely and follow WHS policies and procedures
RIIWMG203E	Drain and dewater civil construction sites

Plus, five (5) Elective units are to be chosen in consultation with our Training Team.



# OUR PARTNERS

As the Training Division of the Civil Contractors Federation South Australia, we come with some heavy duty industry endorsement. We are proudly supported by the following partners.

## SUPPORTING PARTNERS



Renewal SA's Works Program is a training and employment initiative for local people

RenewalSA



Government of South Australia

## INDUSTRY PARTNERS

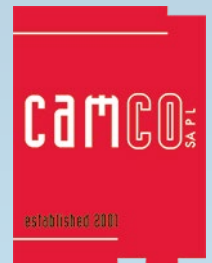


outside ideas

T&J CONSTRUCTIONS



DAVISON EARTHMOVERS



Plumbing & Pipeline SOLUTIONS



CIVIL APPRENTICESHIPS AND CAREERS LTD

Proudly supported by CCF SA



The Training Division of the CCF RTO 45621



CIVIL CONTRACTORS FEDERATION SOUTH AUSTRALIA

[www.civiltrain.com.au](http://www.civiltrain.com.au)

(08) 8111 8000